



Installation Library

Solaris™ Easy Access Server 2.0



SOLARIS™





Solaris Easy Access Server 2.0 Installation Library

Sun Microsystems, Inc.
901 San Antonio Road
Palo Alto, CA 94303-4900
U.S.A.

Part No: 805-3161-10
October 1998

Copyright 1998 Sun Microsystems, Inc. 901 San Antonio Road, Palo Alto, California 94303-4900 U.S.A. All rights reserved.

This product or document is protected by copyright and distributed under licenses restricting its use, copying, distribution, and decompilation. No part of this product or document may be reproduced in any form by any means without prior written authorization of Sun and its licensors, if any. Third-party software, including font technology, is copyrighted and licensed from Sun suppliers.

Parts of the product may be derived from Berkeley BSD systems, licensed from the University of California. UNIX is a registered trademark in the U.S. and other countries, exclusively licensed through X/Open Company, Ltd.

Sun, Sun Microsystems, the Sun logo, SunDocs, Solaris for Intranets, Solstice, Solstice AdminSuite, Solstice AutoClient, Solstice DiskSuite, Java, HotJava, JumpStart, AnswerBook, AnswerBook2, SunLink, Sun WebServer, Solstice NFS Client, Solstice Internet Mail Server, WebNFS, Solstice PC-CacheFS, Solaris Management Console, Solstice Backup, SunScreen, AdminTools, NFS and Solaris are trademarks, registered trademarks, or service marks of Sun Microsystems, Inc. in the U.S. and other countries. All SPARC trademarks are used under license and are trademarks or registered trademarks of SPARC International, Inc. in the U.S. and other countries. Products bearing SPARC trademarks are based upon an architecture developed by Sun Microsystems, Inc. Netscape Navigator is a trademark of Netscape Communications Corporation. Display PostScript is a trademark of Adobe Systems, Incorporated. PostScript is a trademark of Adobe Systems, Incorporated., which may be registered in certain jurisdictions.

The OPEN LOOK and Sun™ Graphical User Interface was developed by Sun Microsystems, Inc. for its users and licensees. Sun acknowledges the pioneering efforts of Xerox in researching and developing the concept of visual or graphical user interfaces for the computer industry. Sun holds a non-exclusive license from Xerox to the Xerox Graphical User Interface, which license also covers Sun's licensees who implement OPEN LOOK GUIs and otherwise comply with Sun's written license agreements.

RESTRICTED RIGHTS: Use, duplication, or disclosure by the U.S. Government is subject to restrictions of FAR 52.227-14(g)(2)(6/87) and FAR 52.227-19(6/87), or DFAR 252.227-7015(b)(6/95) and DFAR 227.7202-3(a).

DOCUMENTATION IS PROVIDED "AS IS" AND ALL EXPRESS OR IMPLIED CONDITIONS, REPRESENTATIONS AND WARRANTIES, INCLUDING ANY IMPLIED WARRANTY OF MERCHANTABILITY, FITNESS FOR A PARTICULAR PURPOSE OR NON-INFRINGEMENT, ARE DISCLAIMED, EXCEPT TO THE EXTENT THAT SUCH DISCLAIMERS ARE HELD TO BE LEGALLY INVALID.

Copyright 1998 Sun Microsystems, Inc. 901 San Antonio Road, Palo Alto, Californie 94303-4900 Etats-Unis. Tous droits réservés.

Ce produit ou document est protégé par un copyright et distribué avec des licences qui en restreignent l'utilisation, la copie, la distribution, et la décompilation. Aucune partie de ce produit ou document ne peut être reproduite sous aucune forme, par quelque moyen que ce soit, sans l'autorisation préalable et écrite de Sun et de ses bailleurs de licence, s'il y en a. Le logiciel détenu par des tiers, et qui comprend la technologie relative aux polices de caractères, est protégé par un copyright et licencié par des fournisseurs de Sun.

Des parties de ce produit pourront être dérivées du système Berkeley BSD licenciés par l'Université de Californie. UNIX est une marque déposée aux Etats-Unis et dans d'autres pays et licenciée exclusivement par X/Open Company, Ltd.

Sun, Sun Microsystems, le logo Sun, SunDocs, Solaris for Intranets, Solstice, Solstice AdminSuite, Solstice AutoClient, Solstice DiskSuite, Java, HotJava, JumpStart, AnswerBook, AnswerBook2, SunLink, Sun WebServer, Solstice NFS Client, Solstice Internet Mail Server, WebNFS, Solstice PC-CacheFS, Solaris Management Console, Solstice Backup, Solstice Backup, SunScreen, AdminTools, NFS et Solaris sont des marques de fabrique ou des marques déposées, ou marques de service, de Sun Microsystems, Inc. aux Etats-Unis et dans d'autres pays. Toutes les marques SPARC sont utilisées sous licence et sont des marques de fabrique ou des marques déposées de SPARC International, Inc. aux Etats-Unis et dans d'autres pays. Les produits portant les marques SPARC sont basés sur une architecture développée par Sun Microsystems, Inc. Netscape Navigator est une marque de Netscape Communications Corporation. PostScript est une marque de fabrique d'Adobe Systems, Incorporated. PostScript est une marque de fabrique d'Adobe Systems, Incorporated, laquelle pourrait être déposée dans certaines juridictions.

L'interface d'utilisation graphique OPEN LOOK et Sun™ a été développée par Sun Microsystems, Inc. pour ses utilisateurs et licenciés. Sun reconnaît les efforts de pionniers de Xerox pour la recherche et le développement du concept des interfaces d'utilisation visuelle ou graphique pour l'industrie de l'informatique. Sun détient une licence non exclusive de Xerox sur l'interface d'utilisation graphique Xerox, cette licence couvrant également les licenciés de Sun qui mettent en place l'interface d'utilisation graphique OPEN LOOK et qui en outre se conforment aux licences écrites de Sun.

CETTE PUBLICATION EST FOURNIE "EN L'ETAT" ET AUCUNE GARANTIE, EXPRESSE OU IMPLICITE, N'EST ACCORDEE, Y COMPRIS DES GARANTIES CONCERNANT LA VALEUR MARCHANDE, L'APTITUDE DE LA PUBLICATION A REPONDRRE A UNE UTILISATION PARTICULIERE, OU LE FAIT QU'ELLE NE SOIT PAS CONTREFAISANTE DE PRODUIT DE TIERS. CE DENI DE GARANTIE NE S'APPLIQUERAIT PAS, DANS LA MESURE OU IL SERAIT TENU JURIDIQUEMENT NUL ET NON AVENU.



Adobe PostScript



Please
Recycle

Contents

1. **Planning and Starting Your Installation** 1
 - How to Plan Your Installation 1
 - Installing the Products 8
 - Deciding on an Installation Method 9
 - ▼ To Install Using Web Start 10
 - ▼ To Install Using Web Start's Scripted Version 10
 - Installing Solstice NFS Client 3.2 11
 - ▼ To Install Solstice NFS Clients on Microsoft Windows 95, 98, or NT 11
 - Installing Solaris Management Console Client 12
 - ▼ To Install Solaris Management Console (SMC) Clients 12
 - Configuring Solstice PPP 3.0.1 and Sun WebServer 2.0 to work with SMC 13
 - Configuring Solstice PPP 3.0.1 13
 - Configuring Sun WebServer 13
2. **What's New** 15
 - Installation 15
 - Solaris Web Start 2.0 15
 - Network Services 16
 - Sun WebServer 2.0 16
 - Solstice NFS Client 3.2 16

	TotalNET Advanced Server 5.2	17
	System and Network Management	17
	Solaris Management Console 1.0	17
	Sun Directory Services 3.1	18
	Solaris Data Backup Utility 5.1.1	18
	SPARC: Solstice DiskSuite 4.2	18
	Documentation	19
	AnswerBook2 Server	19
	AnswerBook Document Collections	19
3.	Upgrading Software	21
	DiskSuite 4.2 Upgrade	21
	TotalNET 5.2 Advanced Server Upgrade	22
	Sun WebServer 2.0 Upgrade	22
4.	Licensing	23
	What Licenses You Receive	23
	How to Install the Licenses	25
	How to Order Additional Licenses or Software	26
	Where to Order Licenses	27
5.	Troubleshooting	29
	Contacting Customer Support	29
	Solstice PPP Bug	29
	Solstice PPP: Adding OS Services With AdminSuite Hostmanager Fails After Installing Solstice PPP 3.0.1 4039044	29
	SPARC: Solstice AdminSuite 2.3/AutoClient 2.1 Installation Bug 4150243	31
	Workaround for Solaris 2.5.1 HW 11/97	31
	Workaround for Solaris 2.6 HW 3/98 or HW 5/98	32
6.	Using the Solaris Product Registry to View Installed Software and Uninstall Software	35
	What's in the Registry?	35

	Starting the Registry, Uninstalling, Launching an Installer	37
	▼ To View Registered Software	37
	▼ To Uninstall Software	37
	▼ To Launch an Installer From the Registry	38
7.	Accessing Online Documentation	39
	What Documentation Comes With Solaris Easy Access Server?	39
	To Use AnswerBook2	43
A.	Information for a pkgadd Installation	45
	Installing AnswerBook2 Documentation Using pkgadd	45
	Packages Available With Solaris Easy Access Server Products	46
B.	Product Compatibility	49
	Product Compatibility	49

Tables

TABLE 1-1	System Information to Collect	2
TABLE 1-2	Product Description and Disk Space Requirements	3
TABLE 1-3	Hardware and Software Requirements	6
TABLE 1-4	Installation Methods	9
TABLE 4-1	Licenses Received With Solaris Easy Access Server	23
TABLE 4-2	Installation of Solaris Easy Access Server Licenses	25
TABLE 4-3	Additional Licenses Available	26
TABLE 4-4	Sun License Centers	28
TABLE 7-1	Solaris Easy Access Server Documents in AnswerBook2 Format	40
TABLE 7-2	Solaris Easy Access Server Documents in Other Formats	42
TABLE A-1	Product Packages and Compatibility	46
TABLE B-1	Product Platform, Compatibility, and Shared Components	49

Planning and Starting Your Installation

This chapter describes how to plan for and install the products of Solaris™ Easy Access Server 2.0.

Note - For some products, there is AnswerBook™ documentation and also HTML or PostScript™ document files (on the Solaris Easy Access Server CD). If there is a conflict between the AnswerBook documentation and the HTML or PostScript documentation, the AnswerBook documentation is more recent and contains the correct information. In the same way, the *Solaris Easy Access Installation Library* is more recent and supersedes all HTML and PostScript documentation on the Solaris Easy Access Server CDs.

How to Plan Your Installation

“Product Compatibility” on page 49 lists the products that have shared components or require other software such as a browser.

1. **Make sure a CD-ROM drive is attached to the system where you plan to install Solaris Easy Access Server products.**
2. **Make sure that your system is running the Solaris 2.6 or Solaris 7 operating environment.**

All of the products in Solaris Easy Access Server run on the Solaris 2.6 or Solaris 7 operating environment. Many of the products also run on earlier versions of the Solaris operating environment (as mentioned in their online product documentation), but their ability to run on earlier versions is not supported as part of Solaris Easy Access Server 2.0.

If you will also be upgrading the Solaris operating environment or you are using previous versions of the products on the Solaris Easy Access Server CD, see Chapter 3 for procedures you need to complete before upgrading your software or operating environment.

3. If your system is attached to a network, gather system information.

Use Table 1-1 to gather system information that you may be asked to supply during installation. Collecting this information now will save you time during installation.

TABLE 1-1 System Information to Collect

System Information	Example	Command for Finding Information
System's name (host name)	crater	<code>/usr/bin/uname -n</code>
Processor type	sparc	<code>/usr/bin/uname -p</code>
Primary network interface	ie0	<code>ifconfig -a</code>
IP address	129.221.2.1	<code>ypmatch system_name hosts or nismatch system_name hosts.org_dir</code>
Domain name	chandy.West.Arp.COM	<code>/usr/bin/domainname</code>
System part of a subnet	Yes	Check for existing subnet in <code>/etc/netmasks</code>
Netmask	255.255.255.0	<code>more /etc/netmasks</code>

4. Decide which products you want to install and plan disk space.

Before installing Solaris Easy Access Server 2.0 products, use Table 1-2 to determine your disk space needs. Descriptions of the products, disk and memory requirements are provided in the table. Note that disk space requirements are *approximate* and vary according to your system configuration. You also need to allocate disk space for running the products.

TABLE 1-2 Product Description and Disk Space Requirements

Product	Product Description	Disk Space, Memory, Other Requirements
Solstice™ AdminSuite™ 2.3 and Solstice AutoClient™ 2.1 (installed together)	<p>A suite of graphical user interface tools and commands that you can use to perform system administration tasks.</p> <p>A system that enables you to set up AutoClient systems (a system that caches its system software from a server).</p>	<p>AdminSuite:</p> <ul style="list-style-type: none"> • 35 MB plus 15 MB disk space for each architecture (SPARC™ and x86) • 32 MB of memory recommended <p>AutoClient:</p> <ul style="list-style-type: none"> • 100 MB minimum disk space • 32 MB memory recommended
Solaris Data Backup Utility 5.1.1	<p>An easy-to-use network storage management software product. It performs automatic backups of scheduled files. You can also perform backups on an as-needed basis and archive project related data for additional protection.</p>	50 MB disk space
Solstice DiskSuite™ 4.2	<p>A software product that enables you to manage large numbers of disks, and the data on those disks, to increase storage capacity and data availability.</p>	<p>20 MB disk space with at least two drives</p> <hr/> <p>Note - If you have a version of DiskSuite already installed, see "DiskSuite 4.2 Upgrade" on page 21 for instructions on upgrading DiskSuite.</p> <hr/>
Java™ IDL 1.1	<p>Provides the software foundation needed to deliver enterprise client/server applications for the Internet. Applications that use Java IDL seamlessly integrate with non-Java programs and programs from other vendors.</p>	1 MB disk space
Solstice PPP 3.0.1	<p>Provides extended Internet connectivity for Solaris SPARC and x86 systems. With it, a Solaris system acts as an Internet work router and supports all IP applications transparently over both leased lines and dial-up connections.</p>	1 MB disk space for product

TABLE 1-2 Product Description and Disk Space Requirements *(continued)*

Product	Product Description	Disk Space, Memory, Other Requirements
SunScreen™ SKIP	Sun's implementation of Simple Key-Management for Internet Protocols (SKIP), provides encryption for your data and authentication of the IP traffic stream. This version is for Solaris.	10 MB disk space for installation; 7 MB permanently used 16 MB memory required; 32 MB recommended
Solstice Internet Mail Server™ 2.0	An advanced mail solution for Solaris workgroups, providing open, Internet mail, based on standards such as IMAP4, POP3, SMTP, and MIME. It supports disconnected computing for mobile or remote users.	3.5 MB disk space in /opt
Solaris Management Console (SMC)	A Java-based tool for administration of Solaris servers.	6 MB disk space needed
<p>Note - SMC is installed on a server, but there is a client portion that must be installed on any client that is used to manage a SMC-enabled server. For the client installation procedure, see "Installing Solaris Management Console Client" on page 12</p>		
Sun Directory Services 3.1	Sun Directory Services provides a comprehensive and flexible directory and naming service that includes a state-of-the-art LDAP v3 server that interfaces with all LDAP v3-compliant directory clients on the market, a NIS server that integrates seamlessly into an existing NIS environment, and a RADIUS server that offers authentication facilities for remote users.	42.8 MB in /opt 2.0 MB in /var 0.4 MB in /etc The default location for the directory database is /var. You must allow enough space for the database. 1,000 entries requires roughly 1.5 MB of disk space. 64 MB of RAM and 128 MB of swap

TABLE 1-2 Product Description and Disk Space Requirements *(continued)*

Product	Product Description	Disk Space, Memory, Other Requirements
Sun WebServer™ 2.0	A highly scalable high performance web server for accessing, managing, and distributing information over the Internet, with web-based administration and advanced security.	<p>4 MB and space for documents and log files</p> <p>Memory: For SPARC or Intel, 64 MB memory minimum, 96 MB recommended.</p> <p>Swap: For SPARC, 64 MB minimum; 192 MB recommended. For Intel, 64 MB minimum; 96 MB recommended.</p> <p>Requires: Java Developer Kit 1.1.5 or compatible version</p>
TotalNET Advanced Server 5.2 (SunLink™)	Network operating system software that provides transparent PC to UNIX® connectivity. It allows a UNIX server to act as a file, print, and application server to a variety of client PCs and Apple Macintosh computers in a heterogeneous, networked environment.	35 MB disk space
Solstice NFS™ Client™ 3.2	When installed on a PC, Solstice NFS Client 3.2 offers low-cost, high-performance intranet NFS file and print services for Microsoft Windows users.	<p>16 MB memory for Windows 95 and Windows NT</p> <p>4 to 30 MB disk space on every PC on which you install Solstice NFS Client</p> <p>PC-CacheFS™ caching software requires 30 MB disk space</p> <hr/> <p>Note - Solstice NFS Client is installed outside of Web Start. For the Solstice NFS Client Procedure, see "Installing Solstice NFS Client 3.2" on page 11.</p> <hr/>

Note - The Java Developer Kit software is included as part of Solaris Easy Access Server, but is not listed in Table 1-2 because the Java Developer Kit is normally installed during the Solaris installation. If you did not install the Java Developer Kit when you installed the Solaris 2.6 or Solaris 7 operating environment, you can install it now by:

- Going to <http://www.sun.com/solaris/java> and downloading the software or
 - Using a file manager tool, going to `/cdrom/solaris_for_intranets_2_0/products/JDK_1.1.6` on the Solaris Easy Access Server CD and double-clicking on the installer icon.
-

5. Consider other hardware and software requirements.

Hardware and software requirements for all products in Solaris Easy Access Server 2.0 are listed in Table 1-3.

TABLE 1-3 Hardware and Software Requirements

Product	Hardware	Software
Solaris Data Backup Utility 5.1.1	<ul style="list-style-type: none"> • You need at least one local storage device for use by the Solaris Data Backup Utility 5.1.1 server to back up and recover files. If the device uses tape, it must be nonrewinding. • Solaris Data Backup Utility supports non-automated backup devices (single devices) in 4mm, 8mm, and 1/4 inch formats. 	<ul style="list-style-type: none"> • You need a directory on the server large enough for the Solaris Data Backup Utility 5.1.1 server indexes and media database (usually <code>/usr/nsr</code>) • The installation script checks for space and suggests one or more locations for the indexes and media database. • If you wish to install the online Solaris Data Backup Utility 5.1.1 man pages, you need a directory with 1 Mbyte of free disk space to receive them (for example, <code>/usr/man</code>).
Java IDL 1.1		<p>Java Development Kit 1.0.2</p> <p>To run Java IDL applets, you need either HotJava™ 1.0 or Netscape Navigator™ 3.0</p>

TABLE 1-3 Hardware and Software Requirements *(continued)*

Product	Hardware	Software
Solstice PPP 3.0.1		<ul style="list-style-type: none">• Graphical user interface. You need access to an X Window System window manager to use the graphical user interface for Solstice PPP (<code>ppptool</code>). There is also a command-line version of this utility.
SunScreen SKIP 1.1.1		<p>Software: Supports international Solaris versions</p> <p>Network Interfaces:</p> <ul style="list-style-type: none">• Any Sun equipped 10/100 Mbps ethernet interface• Any Sun supported FDDI interface• Solaris PPP 5.4 or later (shipped with Solaris) or Solstice PPP 3.0 or later (included with Solaris Easy Access Server)¹
Solstice Internet Mail Server 2.0		A fully installed and configured Sendmail program
Sun Directory Services 3.1		<p>Solaris 2.6 or compatible operating environment</p> <p>A Java compatible browser. HotJava 1.0.2 is recommended.</p>
Sun WebServer 2.0		<p>To use Java-based remote administration with Sun WebServer, you need Sun Hot Java 1.1.4 or compatible version.</p> <p>If you have a version of Sun WebServer already installed, see "Sun WebServer 2.0 Upgrade" on page 22 for instructions on upgrading Sun WebServer.</p>

TABLE 1-3 Hardware and Software Requirements *(continued)*

Product	Hardware	Software
TotalNET Advanced Server 5.2	For i386 platforms, TotalNET does not support NetBEUI and AppleTalk token rings.	During the installation of TotalNET Advanced Server, the installation program adds the local user and group <code>totalnet</code> to your system as the TotalNET administrative user and group, if it does not already exist. If you have a version of TotalNET installed, see "TotalNET 5.2 Advanced Server Upgrade" on page 22 for instructions on upgrading TotalNET.
Solstice NFS Client 3.2	486, Pentium or Pentium-II PC	Microsoft Windows 95, 98, or NT

1. The version of PPP that is included with Solaris Easy Access Server is the preferred version.

6. If you have versions of DiskSuite, TotalNET or Sun WebServer installed, refer to Chapter 3 for instructions on how to upgrade these programs.

Installing the Products

This section explains how to use the Solaris Web Start utility to install the contents of the Solaris Easy Access Server software product box.

All the products can be installed from Web Start with two exceptions:

- To install Solstice NFS client, see "Installing Solstice NFS Client 3.2" on page 11
- To install Solaris Management Console clients (after installing Solaris Management Console on the server), see "Installing Solaris Management Console Client" on page 12

Deciding on an Installation Method

Decide which method to use for installing the software.

There are two ways to install Solaris Easy Access Server products, Table 1-4 compares these methods.

TABLE 1-4 Installation Methods

With This Method ...	You Can ...	You Can't ...	Refer to This Documentation...
Solaris Web Start (on the Solaris Easy Access Server 2.0 CD)	<p>Install all Solaris Easy Access Server products, the AnswerBook2™ document server, AnswerBook collections, and other documentation from one easy-to-use installation tool</p> <p>Install Solaris Easy Access Server products on previously installed Solaris 2.6 or Solaris 7 operating environments</p> <p>Install some of the products into alternative areas of the hard disk if the product's default install location is full</p>	<p>Install the Solaris 2.6 or Solaris 7 operating environment</p> <p>Repartition the hard drive if you don't have partitions large enough for the products you want to install</p>	See "Installing the Products" on page 8
Solaris Web Start (on the Solaris 7 CD)	<p>Install the Solaris 7 operating environment and all Solaris for Intranet products from one easy-to-use installation tool</p> <p>Plan appropriate disk partitioning at installation</p> <p>Install all Solaris Easy Access Server products, the AnswerBook document server, AnswerBook collections, and other documentation from one easy-to-use installation tool</p>	Install Solaris Easy Access Server products on a Solaris 2.6 system	See <i>Solaris 7 (Intel Platform Edition) Installation Library</i> or <i>Solaris 7 (SPARC Platform Edition) Installation Library</i>

Note - Command line installation (pkgadd) is available, but is not recommend except for experienced UNIX administrators. For a pkgadd installation, see "Packages Available With Solaris Easy Access Server Products " on page 46 for a list of packages available with Solaris Easy Access Server 2.0.

▼ To Install Using Web Start

1. Insert the Solaris Easy Access Server CD.

A File Manager window will open to display files included on the CD. One of these is named `installer`.

Note - The installer program at the top level of the Solaris Easy Access Server CD installs all of the Solaris Easy Access Server products. If you want to install just one or two products, there is a directory on the CD for each product. Each of these directories contains an installer program that installs just that product.

2. Double click on the `installer` file to open the Web Start installation window.

The file manager Run window appears.

3. Click OK in the file manager Run window.

Follow the instructions in the Web Start installation.

4. If prompted to, enter the system's root password.

The Web Start installer welcome screen is displayed.

5. Click Next in the Web Start welcome screen and follow the instructions.

Use the Back button to view previous screens.

6. When you have completed the installation, see the following sections:

- If you want to use NFS Client, 3.2, see "Installing Solstice NFS Client 3.2" on page 11
- If you installed Solaris Management Console, and you want to manage it from any system other than the server on which SMC is installed, see "Installing Solaris Management Console Client" on page 12
- To learn if the products you have installed have any recommended or required patches, see the patches section in *Solaris Easy Access Server 2.0 Release Notes*

▼ To Install Using Web Start's Scripted Version

1. To run Web Start 2.0 as a non-graphical batch install, run the installer command from a terminal window or from a UNIX shell script by entering the following:

```
installer -nodisplay
```

If you choose the `-nodisplay` option, Web Start will install without asking any questions, using all default choices.

Note - The installer program at the top level of the Solaris Easy Access Server CD installs all of the Solaris Easy Access Server products. If you want to install products individually, there is a directory on the CD for each product. Each of these directories contains an installer program; running one of the installer programs as `installer -nodisplay` installs the corresponding product without asking questions, using all default choices.

2. **When you have completed the installation, see the following sections:**

- If you want to use NFS Client, 3.2, see “Installing Solstice NFS Client 3.2” on page 11
- If you installed Solaris Management Console, and you want to manage it from any system other than the server on which SMC is installed, see “Installing Solaris Management Console Client” on page 12
- To learn if the products you have installed have any recommended or required patches, see the patches section in *Solaris Easy Access Server 2.0 Release Notes*

Installing Solstice NFS Client 3.2

Solstice NFS Client 3.2 cannot be installed using the Web Start installation utility. Use the following installation procedure. Solstice NFS Client is installed on a Microsoft Windows 95, 98, or NT machine.

Solstice NFS Client also includes the PCNFSD daemon that must run on a Solaris server in the network. The PCNFSD daemon provides user authentication services that allow Solstice NFS Client to access files on any NFS server in the network. The daemon also provides PCNFSD-based printing. This daemon is included on the Solaris Easy Access Server CD in the `SUNWpcnfd` package and can be installed using the `pkgadd` command. For more information about PCNFSD, see Appendix B of the *Solstice NFS Client User's Guide*.

▼ To Install Solstice NFS Clients on Microsoft Windows 95, 98, or NT

1. **Insert the Solaris Easy Access Server CD in your Microsoft Windows 95, 98, or NT CD-ROM drive.**

The `setup.exe` program runs automatically.

2. **Click the 'Install NFS Client' button.**

3. Click 'Next' to step through the installation screens, answering the questions.
4. Restart your computer.
You must restart your system to include the new configuration information; restarting Microsoft Windows is not enough.
5. When you have completed the NFS Client installations, see the following sections:
 - If you installed Solaris Management Console, and you want to manage it from any system other than the server on which SMC is installed, see "Installing Solaris Management Console Client" on page 12
 - To learn if the products you have installed have any recommended or required patches, see the patches section in *Solaris Easy Access Server 2.0 Release Notes*

Installing Solaris Management Console Client

The server portion of Solaris Management Console can be installed using Web Start or pkgadd. However, you must install the client portion of SMC on any system that is going to manage a SMC-enabled server by following the procedure below.

▼ To Install Solaris Management Console (SMC) Clients

1. Launch a web browser.
2. Point to port 898 on the server on which you installed SMC server software.
If you have installed SMC server software on a network-available machine named wyoming, for instance, point to the following URL:
`http://wyoming:898`
The Solaris Management Console server site will be displayed, with links to SMC requirements and procedures, including instructions for downloading and installing SMC client software.
3. Read the Installation Requirements, then click Download Procedure.
4. Download the software and install the SMC client software, as described.

When you have completed the Solaris Management Console Client installations, to learn if any of the products you have installed have recommended or required patches, see the patches chapter in *Solaris Easy Access Server 2.0 Release Notes*.

Configuring Solstice PPP 3.0.1 and Sun WebServer 2.0 to work with SMC

Before Solstice PPP 3.0.1 and Sun WebServer 2.0 tools will work with SMC, you need to configure them. For configuration instructions, see the following sections.

Configuring Solstice PPP 3.0.1

After installing Solstice PPP 3.0.1, you must configure it before it can be used. SMC presents two tools to help in the administration of PPP, one of which does this initial configuration.

- PPP Configuration (`pppinit`)- run this tool once to set up your PPP connection. This script walks you through the steps needed to select interfaces, modems, etc.

Note - Run this command only one time to set the initial configuration of the PPP interface.

- Point to Point Protocol (`ppptool`)- after the initial configuration (using PPP Configuration) is performed, this tool allows you to manage the connection.

Configuring Sun WebServer

For directions on defining web server administrators, configuring the Sun WebServer Administration Server, and starting the web server, see "Configuring the Administration Server" in *Sun WebServer Installation Guide*

Once the Sun WebServer product is configured, you can add it to SMC using the following information:

Application Type	URL
Category	Web & Information
Run As	User
Application Name	Sun WebServer
Executable Path/URL	<code>http://hostname:port/admin/admin.html</code>
	<hr/> Note - 2380 is the default port number. <hr/>
Icon	<code>/usr/sadm/smc/client/SUNWmc/htdocs/images/webserv.gif</code>

What's New

This chapter highlights new features added to Solaris Easy Access Server since the previous release (Solaris Server Intranet Extension 1.0). Installation of Solaris Easy Access Server has been made easier with the addition of the Solaris Web Start installation tool. System management and network services products have also been upgraded.

Installation

The new Solaris Web Start installation tool makes installation easy.

Solaris Web Start 2.0

You can now install Solaris Easy Access Server software using Solaris Web Start. Web Start is a graphical, Java-based installation utility. It guides you through the selection and installation of Solaris Easy Access Server software. Web Start gives you the choice of accepting a default installation or customizing the installation. If you wish to customize your installation, you can choose which product components to install and specify the destination directory for a product.

Network Services

Solaris Easy Access Server provides extensive support for all popular client architectures including UNIX, Windows, NT, Macintosh, and Novell networks. In addition to basic file and print services, Solaris Easy Access Server enhances powerful web publishing to this release.

Sun WebServer 2.0

Sun WebServer 2.0 is highly scalable high-performance web server for accessing, managing, and distributing information over the Internet, with web-based administration and advanced security. It offers the following new features in this release:

- Administration Console user interface
- Java Servlet support
- Support for 3rd party SSL certificates from Verisign
- Support for HTTP 1.1
- Support for publishing using Microsoft Front Page 98

Solstice NFS Client 3.2

If you have Microsoft Windows users who need only the NFS file-sharing connectivity and caching capabilities of Solstice Network Client, Solstice NFS Client is your solution. Solstice NFS Client provides an affordable solution for integrating Microsoft Windows computers into heterogeneous networks.

Solstice NFS Client offers the following new features in this release:

- WebNFS™ client enables users to browse file systems on a WebNFS server over the Internet, just as they can browse NFS servers on a NFS™ network. In addition, users are able to mount shared resources across the Internet using NFS URLs.
- With DOS Printing for Windows 95, users can now print to a network printer from a DOS-based PC application. It is also possible to map a network printer to a local printer port so that it can be accessed from a 16-bit DOS application.
- Solstice PC-CacheFS for Windows NT 4.0 enables Windows NT clients to use local disk caching of network resources in order to reduce network load and to increase performance.
- PCNFSD is now multi-threaded, allowing the daemon to service requests from many more clients.

TotalNET Advanced Server 5.2

TotalNET Advanced Server 5.2 is network operating system software that enables Solaris machines to be scalable file, print, and applications servers for multi-platform environments with PC and Macintosh clients, regardless of client software and network protocol. TotalNET has the following new features:

- TotalNET Administration Suite - TotalNET Administration Suite (TNAS) allows you to configure the TotalNET network through HTML menus and dialog boxes. TotalAdmin is one part of TotalNET.
- New TotalAdmin - The presentation and arrangement of TotalAdmin menu items reflect the new, intuitive TotalNET framework.
- File Name Mapping - The TotalNET Advanced Server maps case to UNIX exactly as given by the client, instead of to lowercase.
- Improved Utility Performance - The TotalNET remote utilities, such as the `ru-` and `nc-` utilities, now support long file names; the `tnpasswd` utility performs more efficiently; the `atconvert` utility allows you to convert from Helios or CAP to TotalNET; and NetWare client utilities function more intuitively.
- Enhanced Tracing - You can now turn tracing on and off from all three realms and for all file services, and you can do so more easily than in previous releases.
- AppleTalk Printer Access from All Realms - This feature allows you to print to AppleTalk printers through TotalNET. TotalNET extends outbound as well as inbound support to the PAP driver.

System and Network Management

System management capabilities are the core of any complete server offering for centralized, simplified management of distributed, heterogeneous environments. The following new products and features enhance the system and network management tools.

Solaris Management Console 1.0

The Solaris Management Console is a Java-based tool for administering Solaris servers. It provides a central integration point for applications and services. The Console also allows a user to register other network hosts and services, which can then be administered from a single machine. When a user logs on, the Console dynamically configures tree views of registered hosts and services. By pointing and clicking a user can remotely launch an application on a selected host and view the application on the local display.

Sun Directory Services 3.1

Sun Directory Services 3.1 provides a comprehensive and flexible directory and naming service that includes a state-of-the-art LDAP v3 server that interfaces with all LDAP v3-compliant directory clients on the market, a NIS server that integrates seamlessly into an existing NIS environment, and a RADIUS server that offers authentication facilities for remote users. Sun Directory Services federates all of an organization's information into a single database that is both easy to update and easy to manage with the graphical tools provided: Deja, an intuitive search tool and editor, and the Admin Console, a user-friendly interface that provides centralized configuration and management of all services. Also, a web gateway offers access to directory information from any web browser.

Solaris Data Backup Utility 5.1.1

Solaris Data Backup Utility 5.1.1 is the single-server version of Solstice Backup™, a family of products. It provides a tightly integrated backup and storage management solution for distributed enterprise environments. It offers new features that enhance scalability and performance. Backup has large file support, which provides backup, browse, and recover services for the 64-bit file systems that are supported under the Solaris 2.6 or Solaris 7 operating environment. Large file support accommodates customer growth and protects your storage management investment.

Backup has improved performance; the backup to disk files feature enables administrators to perform backup and recover activities from hard disk, instead of tape drives. This feature gives you greater flexibility and increased performance with reduced backup time.

SPARC: Solstice DiskSuite 4.2

Solstice DiskSuite 4.2 is a volume management solution designed to meet the demands of mission-critical business applications. It is now 64-bit compliant and therefore operates on the Solaris 7 operating environment. DiskSuite recognizes whether the computer is booted in 64-bit or 32-bit mode and supports either architecture.

DiskSuite also now supports alternate pathing. This allows DiskSuite to see the alternate pathing pseudo devices that are provided on E10000 Enterprise Servers.

DiskSuite 4.2 contains many bug fixes that enhance the operation of the software on both the SPARC and x86 platforms.

Documentation

Improvements to the AnswerBook server and to the documentation have been made for this release.

AnswerBook2 Server

In this release of the Solaris Easy Access Server, documentation has been moved to its own CD. It is now possible to read the AnswerBook documentation without having an AnswerBook2 server installed.

AnswerBook Document Collections

More of the documentation is presented in AnswerBook format in this release. The documentation that is not in AnswerBook format is still easily available in HTML and PostScript formats.

Upgrading Software

This chapter covers upgrade issues and tasks that must be completed for certain Solaris Easy Access Server products outside of Web Start.

The topics covered include:

- Preserving DiskSuite database information when upgrading to DiskSuite 4.2
- Protecting TotalNET information by running a script before upgrading to the Solaris 2.6 operating environment
- Obtaining a new license key when upgrading to TotalNET 5.2
- Getting further information about upgrading to Sun WebServer 2.0

DiskSuite 4.2 Upgrade

If your system already has Solstice DiskSuite installed, and has metadevices configured, you must follow the upgrade instructions in the *Solstice DiskSuite 4.2 Installation and Product Notes* on the Solaris Easy Access Server Document CD. Failure to follow those instructions precisely can result in data loss or system failure. See the *Solstice DiskSuite 4.2 Collection* on the documentation CD.

If you are installing DiskSuite on a system for the first time, you may use Solaris Web Start or `pkgadd(1M)` to install the DiskSuite packages. You must still read the installation and operating instructions in *Solstice DiskSuite 4.2 User's Guide* and *Solstice DiskSuite 4.2 Reference Guide* in order to set up the system correctly. Failure to do so can result in data loss or system failure.

If you have previously installed DiskSuite 4.1 for Solaris 2.6 and you want to install the new version of the product, DiskSuite 4.2 for Solaris 7, you must perform both a

Solaris and a DiskSuite upgrade. Refer to the *Solstice DiskSuite 4.2 Installation and Product Notes* for upgrade instructions.



Caution - If a full install of the Solaris operating environment is performed, all DiskSuite configuration information will be lost. Losing the DiskSuite configuration information can result in data loss or complete system failure.

TotalNET 5.2 Advanced Server Upgrade

There is one issue involved in upgrading to TotalNet 5.2 that you must take care of outside of the Web Start installation.

To install TAS 5.2 and preserve your existing TAS configuration, you must enter a new TAS license key. To get a new TAS key, go to: <http://www.sun.com/licensing/> and follow the instructions provided for getting a product license.



Caution - During the Web Start installation, if you do not enter a new activation key and leave the field blank, only a single client license version will be installed and your existing configuration will be lost.

Sun WebServer 2.0 Upgrade

For information about Sun WebServer 2.0 upgrades and Sun WebServer 1.0 migration, see the *Sun WebServer Installation Guide*.

Licensing

This chapter explains:

- What licenses you receive
- How to install licenses
- How to order additional licenses
- Where to order licenses

What Licenses You Receive

TABLE 4-1 Licenses Received With Solaris Easy Access Server

Product	License	Notes
Solstice AdminSuite 2.3	Domain-based license	See the Binary Code License.
Solstice AutoClient 2.1	Unlimited server; 1 client	Right to Use Notification of Solstice AutoClient 2.1 provided and Proof of License Certificate provided.

TABLE 4-1 Licenses Received With Solaris Easy Access Server *(continued)*

Product	License	Notes
Solaris Data Backup Utility 5.1.1	1 server	Solaris Data Backup Utility Enabler Certificate provided. The product runs in evaluation mode for 30 days with an additional 15-day grace period to enable the license.
Solstice DiskSuite 4.2	1 machine	See the Binary Code License.
Java IDL 1.1	Non-exclusive, non-transferable license subject to terms and conditions of enclosed license	See the Binary Code License.
Solstice PPP 3.0.1	PPP no longer requires a license	
SunScreen SKIP 1.1.1	Non-exclusive, non-transferable license subject to terms and conditions of enclosed license	See the Binary Code License.
Solstice Internet Mail Server 2.0	1 server and 5 mailboxes	License certificate included.
Solaris Management Console 1.0	No license required	
Sun Directory Services 3.1	No license required for less than 1,000 directories	
Sun WebServer 2.0	4 servers; 8 virtual host domains per server	

TABLE 4-1 Licenses Received With Solaris Easy Access Server *(continued)*

Product	License	Notes
TotalNET Advanced Server 5.2	1 server; 1 client	See the Binary Code License.
Solstice NFS Client 3.2	1 client (NFSc)	License certificate included, which contains 16-digit serial number. Server-based (FlexLM) licensing provided, but optional. You can also select a 30-day evaluation period during the installation process.

How to Install the Licenses

After you have installed the products, you may need to enable a license to run the product. Table 4-2 gives brief instructions on enabling a product license (if needed) and points you to the relevant installation or licensing document for the product.

TABLE 4-2 Installation of Solaris Easy Access Server Licenses

Product	To enable license:	See this document
Solstice AdminSuite 2.3	Complete the domain-based password request form included in manual and contact License Center	<i>Solstice AdminSuite Domain-Based License Installation Notes</i>
Solstice AutoClient 2.1	No action required	
Solaris Data Backup Utility 5.1.1	Contact License Center and give the host ID of your server and the enabler code	<i>Solstice Backup 5.1 Installation and Release Notes</i>
Solstice DiskSuite 4.2	No action required	
Java IDL 1.1	No action required	
Solstice PPP 3.0.1	No action required	

TABLE 4-2 Installation of Solaris Easy Access Server Licenses *(continued)*

Product	To enable license:	See this document
SunScreen SKIP 1.1.1	No action required	License terms and conditions
Solstice Internet Mail Server 2.0	Select the demo mode license option	<i>Solstice Internet Mail 2.0 Installation and Configuration Guide</i>
Solaris Management Console 1.0	No action required	
Sun Directory Services 3.1	No action required for first 1,000 directories	The Sun Directory Services README.sds on the Solaris Easy Access Server Documentation CD
Sun WebServer 2.0	No action required	
TotalNET Advanced Server 5.2	From License Key Installation screen in the Initial Configuration wizard, select the Update License Key button and leave the license key field blank. Upgrading to TotalNET 5.2 requires a new license key	Browse to: http://www.sun.com/licensing/
Solstice NFS Client 3.2	Enter the 16-digit serial number from the license certificate	<i>Solstice NFS Client User's Guide for Microsoft Windows 95 and Windows NT</i>

How to Order Additional Licenses or Software

In addition to the licenses and software you receive with Solaris Easy Access Server, many products offer additional licensing and software options. Table 4-3 lists these options. To order additional licenses or software, contact a Sun License Center, listed in Table 4-4, unless otherwise indicated.

TABLE 4-3 Additional Licenses Available

Product	Licenses or Software Offered
Solstice AdminSuite 2.3	Additional domain-based licenses.
Solstice AutoClient 2.1	Single independent server; multiple independent servers; 3 redundant license servers; client packs in quantities of 10, 50, 100, and 500.
Solaris Data Backup Utility 5.1.1	Full Solstice Backup product line can be ordered separately.
Solstice DiskSuite 4.2	Additional single machine licenses and unlimited use license.
Java IDL 1.1	Not applicable.
Solstice PPP 3.0.1	Not applicable.
SunScreen SKIP 1.1.1 for Solaris	1024-bit Export-Controlled and 2048-bit U.S. and Canada Use Only version.
Solstice Internet Mail Server 2.0	Additional mailboxes, Enterprise Upgrade, and Sun Messaging Connectivity Services.
Solaris Management Console 1.0	Not applicable.
Sun Directory Services 3.1	Additional packs of 10,000, 100,000 and 1,000,000
Sun WebServer 2.0	For unlimited virtual host domains, contact your sales representative.
TotalNET Advanced Server 5.2	Client licenses.
Solstice NFS Client 3.2	Additional NFS licenses, upgrades to full product set.

Where to Order Licenses

For the latest information, including voice and fax telephone numbers, see:

<http://www.sun.com/licensing>

TABLE 4-4 Sun License Centers

If you are in:	Email contact:
U.S. and Canada	license@Sun.com
Europe	eu-licensing@UK.sun.com
Japan	license@rrd.co.jp
All other countries	eu-licensing@UK.sun.com

Troubleshooting

This chapter describes product-interaction bugs. Also included is an AdminSuite bug that is not a product-interaction bug, but was too late to be included in the AdminSuite documentation.

See the *Solaris Easy Access Server 2.0 Release Notes* for last-minute troubleshooting information.

Contacting Customer Support

If you have any support issues, call your authorized service provider. For further information about support, see <http://access1.sun.com>. To find out more about Sun Microsystems™, Inc., see <http://www.sun.com>.

Solstice PPP Bug

Solstice PPP: Adding OS Services With AdminSuite Hostmanager Fails After Installing Solstice PPP 3.0.1 4039044

The supported method for adding support for diskless clients to a server is to use Solstice AdminSuite's Admintool Hostmanager to add OS services for the architecture of the diskless clients and then to create the diskless clients.

However, because of a version number conflict in SUNWpppk packages (one installed as part of Solaris and another as part of Solstice PPP), you cannot add OS services with Solstice Admintools™ Hostmanager after Solstice PPP is installed on the server. Admintool Hostmanager fails with an error message:

```
Error adding OS service Solaris 2.5.1 sparc sun4m: inconsistent
revision, installed package SUNWfns revision
11.5.1,REV=97.05.07.01.10 does not match revision
11.5.1,REV=96.05.02.21.09 for sparc architecture
```

Note - This problem occurs only when the server and the client that you are adding OS services for are on the same platform (that is, both are x86 or both are SPARC), but do not necessarily have the same architecture (for instance, sun4c, sun4m, sun4u).

Workarounds:

If Solstice PPP is already installed and configured on the server, do the following:

- Save any previously entered PPP configuration information.
- Use `pkgrm` to remove the Solstice PPP SUNWpppk package from the server.
- Use Admintool Hostmanager to add all appropriate OS services.
- Use `pkgadd` to reinstall the Solstice PPP SUNWpppk package from Solaris Easy Access Server on the server.
- Then you can use Admintool Hostmanager to create, remove, and administer diskless clients.

If you need to add OS services later for another diskless client architecture, you must repeat this workaround.

If Solstice PPP has not been installed on the server, do the following:

- Use Admintool Hostmanager to add all appropriate OS services.
- Use `pkgadd` or Solaris Web Start to install the Solstice PPP from the Solaris Easy Access Server on the server.
- Then you can use Admintool Hostmanager to create, remove, and administer diskless clients.

SPARC: Solstice AdminSuite 2.3/ AutoClient 2.1 Installation Bug 4150243

Ultra5, Ultra10, Ultra30, and Ultra60 AutoClients or diskless clients with Solaris 2.5.1 HW 11/97, or Solaris 2.6 HW 3/98 or HW 5/98 may hang during booting or the windowing system may not load. This may be caused by missing patches or packages. If you created OS Services with "Entire Distribution + OEM Support" you will already have the hardware specific drivers and/or framebuffer required. You will then need one additional patch. Workarounds are provided for both the Solaris 2.5.1 HW 11/97, and Solaris 2.6 HW 3/98 or HW 5/98

Workaround for Solaris 2.5.1 HW 11/97

If you did not create OS Services with "Entire Distribution + OEM Support," you can find the packages and patches you need on the Hardware release CDs. The following provide instructions to correct the boot problem, provide windowing support, and install a patch.

Instructions To Correct the Booting Problem

For each affected Solaris 2.5.1 HW 11/97 AutoClient or Diskless Client, add the following packages to each client from the server.

SUNWevc.u SUNWffb.u SUNWhmd SUNWide SUNWm64.u SUNWpci.u SUNWpd SUNWvplr.u

These packages are on the Solaris 2.5.1 HW 11/97 CD in the
/cdrom/cdrom0/s0/Solaris_2.5.1 directory.

To add a package from the server to an AutoClient or Diskless client

1. `#cd package_top_level_directory`
2. `# pkgadd -R /export/root/client_name -d . package_name`

Instructions for Providing Window Support

To provide windowing support for new frame buffers (AFB, FFB, and M64), you will need to add the following packages to the server's Service Area.

SUNWvplu.u SUNWvplxw SUNWafbcf SUNWafbw SUNWafbxg SUNWffbcf SUNWffbw SUNWffbxg
SUNWm64w SUNWm64cf

To add a Package to a Server's Solaris 2.5.1 Service Area

1. # cd *package_top_level_directory*
2. # pkgadd -R /export/exec/Solaris_2.5.1_sparc.all -d . *package_name*

Instructions for Installing the Patch

Install patch 105428-01 to each client from the server. The Solaris 2.5.1 HW 11/97 CD contains patch 105428-01 in the
/cdrom/cdrom0/s0/Solaris_2.5.1/Patches/105428-01 directory.

To Apply a Patch From the Server to an Autoclient or Diskless Client

1. 1. # cd *patch_directory*
2. 2. # ./installpatch -R /export/root/*client_name* .

Workaround for Solaris 2.6 HW 3/98 or HW 5/98

If you did not create OS Services with "Entire Distribution + OEM Support," you can find the packages and patches you need on the Hardware release CDs. The following provide instructions to correct the boot problem, provide windowing support, and install the patch.

Instructions To Correct the Boot Problem

For each affected 2.6 HW 3/98 or 5/98 Autoclient or Diskless Client, add the following packages to each client from the server.

SUNWafb.u SUNWafbr SUNWffb.u SUNWhmd SUNWide SUNWm64.u SUNWpci.u SUNWpd
SUNWw250.u SUNWvplr.u SUNWxfb.u
These packages are on the Solaris 2.6 HW 3/98 and HW 5/98 CDs in the
/cdrom/cdrom0/s0/Solaris_2.6/Product directory.

To add a Package From the Server to an Autoclient or Diskless Client

1. # cd *package_top_level_directory*
2. # pkgadd -R /export/root/*client_name* -d.*package_name*

Instructions for Providing Window Support

To provide windowing support for new frame buffers (AFB, FFB, and M64), you will need to add the following packages to the server's Service Area.

SUNWvplu.u SUNWvplxw SUNWafbcf SUNWafbw SUNWafbxg SUNWffbcf SUNWffbw SUNWffbxg
SUNWm64w SUNWm64cf

To add a Package to a Server's Solaris 2.6 Service Area

1. # cd *package_top_level_directory*
2. # pkgadd -R /export/exec/Solaris_2.6_sparc.all -d .*package_name*

Instructions for Installing a Patch

Install patch 105654-03 to each client from the server. The Solaris 2.6 HW 3/98 and HW 5/98 CDs contain patch 105654-03 in the
/cdrom/cdrom0/s0/Solaris_2.6/Patches/105654-03 directory.

To Apply a Patch From the Server to an Autoclient or Diskless Client

1. # cd *patch_directory*
2. # ./installpatch -R /export/root/*client_name* .

Using the Solaris Product Registry to View Installed Software and Uninstall Software

The Solaris Product Registry is a tool to help users manage installed software. It provides the following capabilities:

- View a list of installed and registered software and some software attributes
- Uninstall software
- Browse for and launch an installer

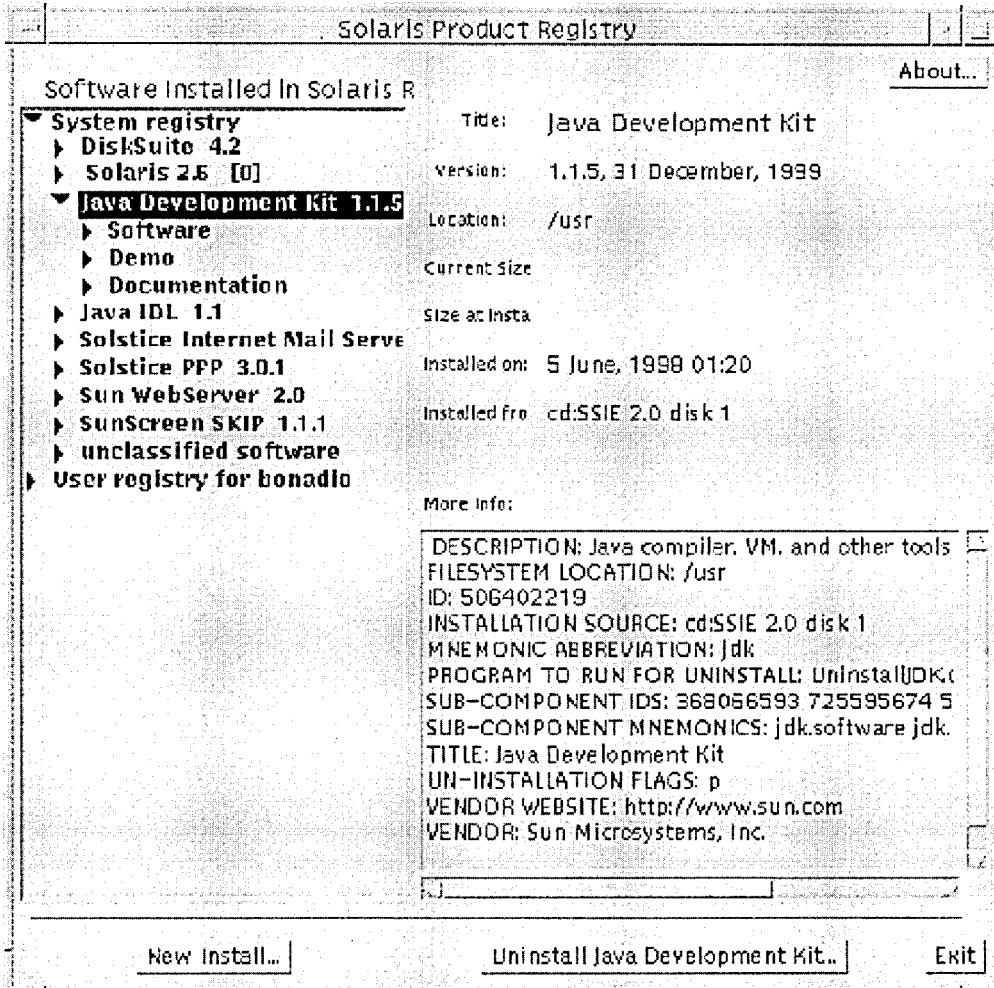
Note - If you used the update option in a Solaris installer, there is currently no feature to automatically restore a previous version of software. However, you can uninstall and re-install to get the software version you want.

What's in the Registry?

The Solaris Product Registry lists all software installed using Solaris WebStart 2.0 or the `svr4` package management commands. The Registry consists of two parts:

- The system registry lists Solaris software, all `svr4` packages, and all software installed and registered by the root user.
- The user registry lists software installed and registered by a user other than the root user.

The main window, shown in the following graphic, consists of three areas of information: a list of installed and registered software, standard attributes of the currently selected software, and a "More info" section showing internal and customized attributes.



Starting the Registry, Uninstalling, Launching an Installer

This section explains how to perform the following tasks:

- View a list of installed and registered software and some software attributes
- Uninstall software
- Browse for and launch an installer

▼ To View Registered Software

You can use the Solaris Product Registry to view a list of installed and registered software. You can also view attributes of software items in the list.

1. **If the Registry is not already running, start it by entering the following command:**

```
/usr/bin/prodreg
```

The Registry main window appears, displaying a list of installed and registered software.

2. **If you wish to view software attributes, select the software for which to view attributes by clicking its name in the software list.**

The Registry displays attribute information for the selected software.

▼ To Uninstall Software

1. **If the Registry is not already running, start it by entering the following command:**

```
/usr/bin/prodreg
```

2. **On the Registry main window, select the software to uninstall by clicking its name in the software list.**

3. **Read the software attributes to make sure this is the software you want to uninstall.**

4. **Click the Uninstall button at the bottom of the Registry main window.**

▼ To Launch an Installer From the Registry

1. If the Registry is not already running, start it by entering the following command:

```
/usr/bin/prodreg
```

2. Click the New Install button at the bottom of the Registry main window. The Registry displays the Select Installer dialog.
3. Use the Select Installer dialog to browse for the installer you want to launch.
4. When you find the installer you want to launch, click its name in the Files list.
5. To launch the installer, click OK.

An Abort button appears in place of the software list on the Registry main window. While the installer is running, the Registry functionality is unavailable. To stop the installer, click the Abort button.

Accessing Online Documentation

The AnswerBook2 product is the Sun online documentation system. It uses a web-browser interface to view, print, and search documentation.

To view the Solaris Easy Access Server online documentation, you need to have access to an AnswerBook2 server. The server software is included on the Solaris Easy Access Server Document CD and is also available from the Solaris 7 Document CD. Once you have installed the server software, you need to install the Solaris Easy Access Server documentation on that server. For information on installing the server software and documentation included on the Solaris Easy Access Server Document CD, see the README file on that CD. For general information about using the AnswerBook2 product, see the module "Accessing Online Documentation" in *Solaris 7 (SPARC Platform Edition) Installation Library* or *Solaris 7 (Intel Platform Edition) Installation Library*.

You can also run the AnswerBook2 server directly from the Solaris Easy Access Server Document CD using the `ab2cd` script, if you have root access to the system on which the CD is connected. For detailed information about this feature, see the README on the Solaris Easy Access Server Document CD.

If you do not have access to an AnswerBook2 document server or do not want to install an AnswerBook2 document server locally, you can view all released Solaris documentation at the web site: <http://docs.sun.com>.

What Documentation Comes With Solaris Easy Access Server?

All Solaris Easy Access Server documentation is available on the Solaris Easy Access Server Document CD, except for the *Solaris Easy Access Server Release Notes* which

are available in printed form. Most documentation is available in AnswerBook2 format although some documentation is provided in other formats. Documentation on that CD can be installed using Solaris Web Start or the pkgadd command.

Table 7-1 lists the documentation provided in AnswerBook2 format and Table 7-2 lists the documentation provided in other formats.

TABLE 7-1 Solaris Easy Access Server Documents in AnswerBook2 Format

AnswerBook Title	Default Installation Directory	Book Titles
<i>Solstice AdminSuite 2.3 & AutoClient 2.1 Collection</i>	/opt/answerbooks/english/ AdminSuite_2.3_AutoClient_2.1/ SUNWadac	<i>Solstice AdminSuite 2.3 Administration Guide</i>
		<i>Solstice AdminSuite Print Administration Guide</i>
		<i>Solstice AdminSuite 2.3 Installation and Release Notes</i>
		<i>Solstice AdminSuite Domain-Based License Installation Notes</i>
		<i>Solstice AutoClient 2.1 Administration Guide</i>
		<i>Solstice AutoClient 2.1 Installation and Release Notes</i>
<i>Solstice Backup 5.1 Collection</i>	/opt/answerbooks/english/ Backup_5.1/SUNWbuab	<i>Solstice Backup 5.1 Installation and Release Notes</i>
		<i>Solstice Backup 5.1 Administration Guide</i>
		<i>Solstice Backup 5.1 Disaster Recovery Guide</i>

TABLE 7-1 Solaris Easy Access Server Documents in AnswerBook2 Format *(continued)*

AnswerBook Title	Default Installation Directory	Book Titles
<i>Solstice DiskSuite 4.2 Collection</i>	<i>/opt/answerbooks/english/ DiskSuite_4.2/SUNWdsab</i>	<i>Solstice DiskSuite 4.2 User's Guide</i>
		<i>Solstice DiskSuite 4.2 Reference Guide</i>
		<i>Solstice DiskSuite 4.2 Installation and Product Notes</i>
<i>Solstice PPP 3.0.1 Collection</i>	<i>/opt/answerbooks/english/ PPP_3.0.1/SUNWppab</i>	<i>Installing Solstice PPP 3.0.1</i>
		<i>Solstice PPP 3.0.1 Administration Guide</i>
		<i>Solstice PPP 3.0.1 User's Guide</i>
<i>SunScreen SKIP 1.1 Collection</i>	<i>/opt/answerbooks/english/ SunScreen_SKIP_1.1.1/SUNWskpab</i>	<i>SunScreen SKIP User's Guide, Release 1.1</i>
		<i>SunScreen SKIP Open Issues and Late-breaking News, Release 1.1.1</i>
<i>Sun Directory Services 3.1 Collection</i>	<i>/opt/SUNWdsab</i>	<i>Sun Directory Services 3.1 User's Guide</i>
		<i>Sun Directory Services 3.1 Administration Guide</i>
<i>Sun WebServer 2.0 Collection</i>	<i>/opt/answerbooks/english/ WebServer_2.0/SUNWswsab</i>	<i>Sun WebServer Installation Guide</i>
		<i>Sun WebServer Command Reference</i>

TABLE 7-1 Solaris Easy Access Server Documents in AnswerBook2 Format *(continued)*

AnswerBook Title	Default Installation Directory	Book Titles
<i>TotalNET 5.2 Collection</i>	/opt/answerbooks/english/ TotalNet_5.2/TASab	<i>TotalNET Advanced Server 5.2 Administration Guide</i> <i>TotalNET Advanced Server 5.2 Reference Manual</i> <i>TotalNET Advanced Server 5.2 Quick Reference</i> <i>TotalNET Advanced Server 5.2 Release Notes</i>
<i>Solstice NFS Client 3.2</i>	/opt/answerbooks/english/ NFS_Client_3.2/SUNWnfsc1	<i>Solstice NFS Client User's Guide for Microsoft Windows 95 and Windows NT</i>

The following documents are found on the documentation CD at
/cdrom/common/Docs.

TABLE 7-2 Solaris Easy Access Server Documents in Other Formats

Product	Files	Format	Default Installation Directory	Package Name
Java IDL Installation Information	JavaIDLruntime1.1_install.html JavaIDLruntime1.1_README.htm JavaIDLruntime1.1_install.ps JavaIDLruntime1.1_README.ps	HTML and PostScript	/usr/SUNWcorba/ READMEs/ JavaIDLruntime1*	SUNWirunr
Solstice Internet Mail Server Release and Installation (IMAP)	SIMS.ps SIMS2_release_notes.ps	PostScript	/opt/SUNWimap/ docs/SIMS*.ps	SUNWimapr

TABLE 7-2 Solaris Easy Access Server Documents in Other Formats *(continued)*

Product	Files	Format	Default Installation Directory	Package Name
Solstice Internet Mail Server Release and Install Information (IPOP)	SUNS.ps SIMS2_releasenotes.ps	PostScript	/opt/SUNWipop/ docs/SIMS*.ps	SUNWipopr
<i>Sun Directory Services 3.1 Release Notes</i>	README	ASCII	/opt/SUNWconn/ README	SUNWsdsr
Sun WebServer Release and Configuration Information	README.sws README.ssl	ASCII	/usr/http/README.*	SUNWhtrcl

See the *Solaris Easy Access Server Release Notes* for a list of other documentation available on the documentation CD.

To Use AnswerBook2

If you are running the Solaris 2.6 or Solaris 7 operating environment, you can start AnswerBook2 in one of the following ways:

- From the CDE front panel, select the AnswerBook2 icon.
- From the OpenWindows Programs menu, choose AnswerBook2.
- From the UNIX command line, type `answerbook2`.
- Start a web browser and enter the document server name, for example:
`http://docserver:port` such as `http://answers:8888`.

Information for a `pkgadd` Installation

This section contains a list of the packages that make up the Solaris Easy Access Server 2.0 products.

You should use the Solaris Web Start method of installation as described in Chapter 1. Many Solaris Easy Access Server products require packages from other products, and some products depend on the presence of another product (see Table B-1). Before beginning a `pkgadd` installation, read the documentation for each product that you plan to install and make sure that you understand the product dependencies. Selecting only certain packages from the Solaris Easy Access Server products is liable to cause some programs not to work.

The installation instructions contained in the each product's documentation were written for standalone installation (not as part of Solaris Easy Access Server). When doing a `pkgadd` installation, use the directory path for the Solaris Easy Access CD, not the directory information given in the individual product installation instructions.

For some products, there is AnswerBook documentation and also HTML or PostScript document files (on the Solaris Easy Access Server CD). If there is a conflict between the AnswerBook documentation and the HTML or PostScript documentation, the AnswerBook documentation is more recent and contains the correct information. In the same way, the *Solaris Easy Access Server Library* is more recent and supersedes all HTML and PostScript documentation on the Solaris Easy Access Server CDs.

Installing AnswerBook2 Documentation Using `pkgadd`

This section contains information about the packages that are part of the Solaris Easy Access Server product. It does not contain instructions on how to do a `pkgadd`

installation; for those instructions, see the *Solaris 7 (Intel Platform Edition) Installation Library* or *Solaris 7 (SPARC Platform Edition) Installation Library*.

Packages Available With Solaris Easy Access Server Products

Table A-1 lists the packages that are part of each product except for AnswerBook products, which are shown in Table 7-1. The AnswerBook2 server and the AnswerBook online documentation is on the Solaris Easy Access Server 2.0 Document CD.

TABLE A-1 Product Packages and Compatibility

Product	Packages Available	Compatibility Notes
Solstice AdminSuite 2.3 and Solstice AutoClient 2.1 (installed together)	SUNWsadmc SUNWsadmo SUNWsacb SUNWsaco SUNWsacu SUNWadmsm SUNWsadmm SUNWsadma SUNWspapp SUNWsadmb SUNWsacd SUNWsadmp	The Solstice launcher depends on the SUNWsadml and SUNWmfrun packages that are available from the all cluster in the Solaris operating environment. It is recommended that you use the Web Start procedure to install Solstice AdminSuite 2.3 and Solstice AutoClient 2.1 because of package dependencies. If you do not use the Web Start procedure, it is recommended that you use the admin_install script. You can find that script at: /cdrom/solaris_easy_access_srvr_2_0#1/products/AdminSuite_2.3+AutoClient_2.1/admin_install
Solaris Data Backup Utility 5.1.1	SUNWsbuc SUNWsbum SUNWsbun SUNWsbu1 SUNWsbu2	/var/tmp
Solstice DiskSuite 4.2	SUNWabmd SUNWmd SunWmdg SUNWmdn	
Java IDL 1.1	SUNWOirun	

TABLE A-1 Product Packages and Compatibility *(continued)*

Product	Packages Available	Compatibility Notes
Solstice PPP 3.0.1	SUNWpppk SUNWpppm SUNWpppr SUNWppps SUNWppps SUNWpppu	
SunScreen SKIP 1.1.1	SICGbdcdr SICGerc2 SICGerc4 SICGes SICGkeymg SICGkisup	
Solstice Internet Mail Server 2.0	SUNWimap SUNWipop	
Solaris Management Console 1.0	SUNWmc SUNWmcman SUNWmcapp SUNWmcc SUNWmcsws	Depends on SUNWhtsvl and SUNWhttp
Sun Directory Services 3.1	SUNWlicsw SUNWlit SUNWsdsc SUNWsdsc	
Sun WebServer 2.0	SUNWfns SUNWhtadm SUNWhtsvl SUNWhttp SUNWhttpc SUNWski SUNWskica SUNWskicw SUNWskild SUNWskimc SUNWskimu SUNWssid SUNWhtdoc SUNWhtman SUNWixavm SUNWixklg	
TotalNET Advanced Server 5.2	SUNWfns TAS TASDOC	
Web Start 2.0	SUNWws	

Product Compatibility

This section contains information on which Solaris Easy Access Server products depend on other products, parts of other products or other tools such as a web browser.

Product Compatibility

Table B-1 explains which products run under both the Solaris 2.6 and the Solaris 7 operating environments and which operate under only one or the other. It also explains which products depend on other products or parts of other products to run.

TABLE B-1 Product Platform, Compatibility, and Shared Components

Product	Runs under Solaris 2.6	Runs under Solaris 7, 32-bit mode	Runs under Solaris 7, 64-bit mode	Requires a Web Server	Requires Java Developer Kit 1.1.6	Requires Hot Java	Other
Solstice AdminSuite 2.3 and Solstice AutoClient 2.1 (installed together)	Yes	Yes	Yes	No	No	No	
Solaris Data Backup Utility 5.1.1	Yes	Yes	Yes	No	No	No	
Solstice DiskSuite 4.2	Yes	Yes	Yes	No	No	No	

TABLE B-1 Product Platform, Compatibility, and Shared Components *(continued)*

Product	Runs under Solaris 2.6	Runs under Solaris 7, 32-bit mode	Runs under Solaris 7, 64-bit mode	Requires a Web Server	Requires Java Developer Kit 1.1.6	Requires Hot Java	Other
Java IDL 1.1	Yes	No	No	No	Yes	No	A Java-enabled browser is required to run Java IDL applets.
Solstice PPP 3.0.1	Yes	Yes	Yes	No	No	No	
SunScreen SKIP 1.1.1 for Solaris	Yes	No	No	No	No	No	
Solstice Internet Mail Server 2.0	Yes	Yes	Yes	No	No	No	
Solaris Management Console 1.0	Yes	Yes	Yes	Yes, embedded	Yes, v. 1.1.5 or 1.1.6	Yes, v. 1.0.3 or 1.1.3	JFC 1.1
Sun Directory Services 3.1	Yes	Yes	Yes	Sun WebServer or another web server for remote administration	Yes	Yes	Swing Class 1.0.1, JNDI, LDAP SPI (all embedded in product). SSL packages must be present for secure LDAP access
Sun WebServer 2.0	Yes	Yes	Yes	No	Yes	Yes v. 1.1.4	
TotalNET Advanced Server 5.2	Yes	Yes	Yes	Yes, uses own version of Apache	No	No	
Solstice NFS Client 3.2 (PCNFSD daemon)	Yes	Yes	Yes	No	No	No	Microsoft Windows 95, 98 or NT 4.0

TABLE B-1 Product Platform, Compatibility, and Shared Components *(continued)*

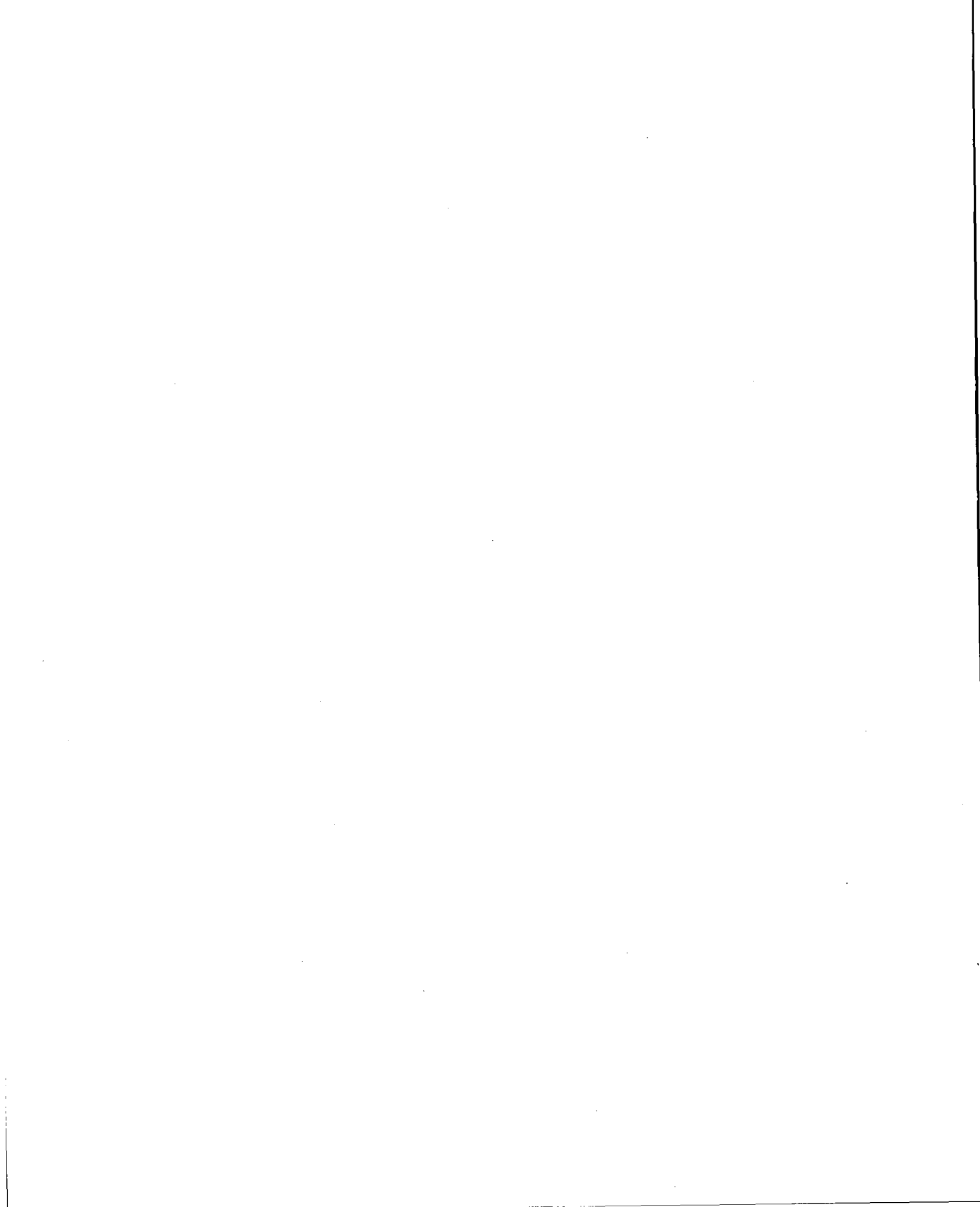
Product	Runs under Solaris 2.6	Runs under Solaris 7, 32-bit mode	Runs under Solaris 7, 64-bit mode	Requires a Web Server	Requires Java Developer Kit 1.1.6	Requires Hot Java	Other
Sun Web Start	Yes	Yes	Yes	Optional, Sun WebServer 2.0	Yes	Optional	Optional Swing Class
AnswerBook2 Server	Yes	Yes	Yes		No	No	An HTML 3.2-compliant browser















Sun Microsystems, Inc.
901 San Antonio Road
Palo Alto, CA 94303
U.S.A. 650-960-1300

Part No. 805-3161-10
October 1998, Revision A